

Wireless Handheld Ultrasound

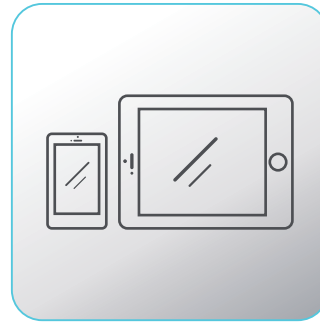


Wireless Handheld Ultrasound: Portable and Efficient Medical Technology

With 17 years of research and development experience, we have become experts in the field of wireless handheld ultrasound technology. We continuously enhance the performance and functionality of our devices to meet the healthcare industry's demand for high-quality ultrasound diagnostics. We firmly believe that the development of wireless handheld ultrasound technology will revolutionize medical services, improving diagnostic efficiency and enhancing patient experiences.



Advantages



FLEXIBLE COLLOCATION

Display devices with different screen sizes according to needs: mobile phone-tablet (Android system, Apple IOS system)



WiFi CONNECT , GET RID OF WIRES

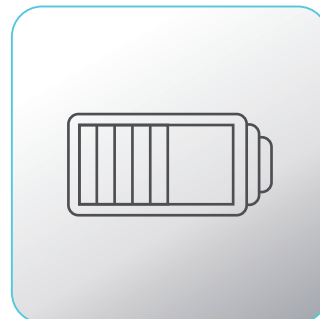
15 meters distance, no signal attenuation



WIRELESS CHARGING-QUICK STRIDE

Invisible charging is carried out by wireless magnetic induction charging, low wear rate, wider application range, high technical content.

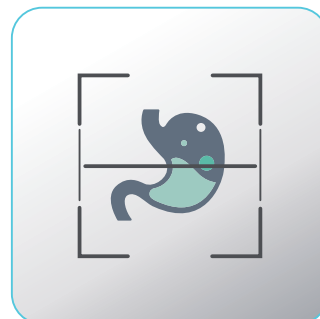
Convenient operation, and charging at any time



One key switch

Various states are clearly visible

The power indicator is displayed in real time, which can effectively control the use time and efficiency



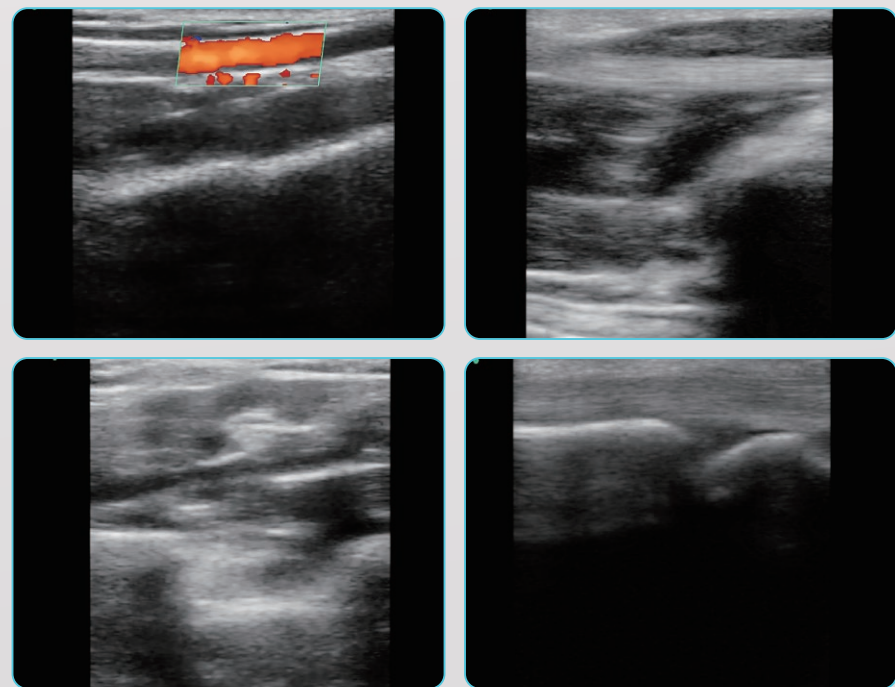
Multiple Scanning Modes

B、 B/M、 CFM、 PDI、 PW

Linear ultrasound scanner

Model L2

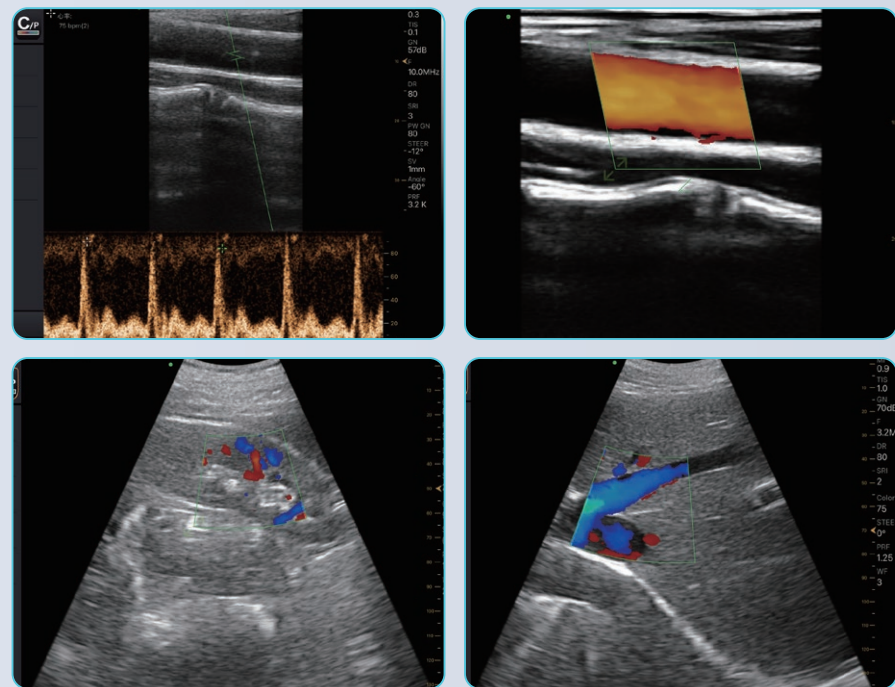
Elements: 128 10.0MHz



Convex+Linear ultrasound scanner

Model X1

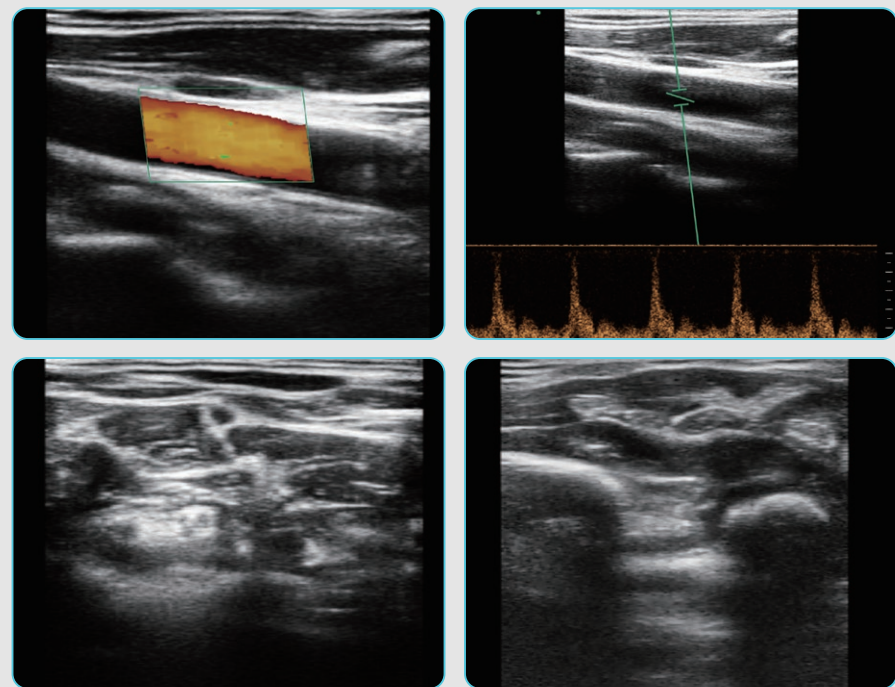
Double Heads Probe 3.2MHz, 7.5MH



Linear ultrasound scanner

Model L1

Elements: 128 7.5MHz

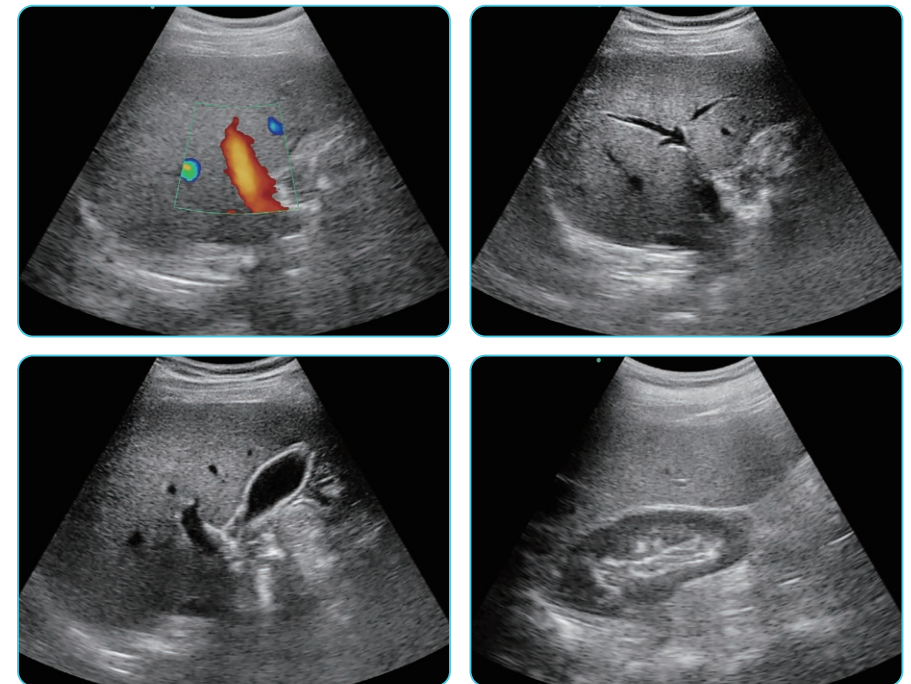




Convex ultrasound scanner

Model C1

Elements: 3.3MHz

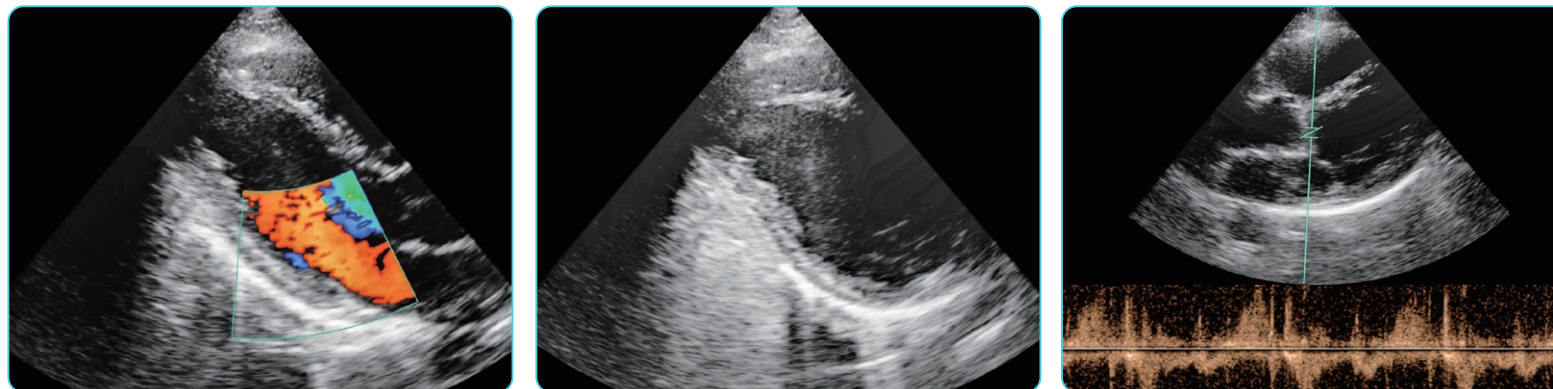




Phased Array ultrasound scanner

Model P1

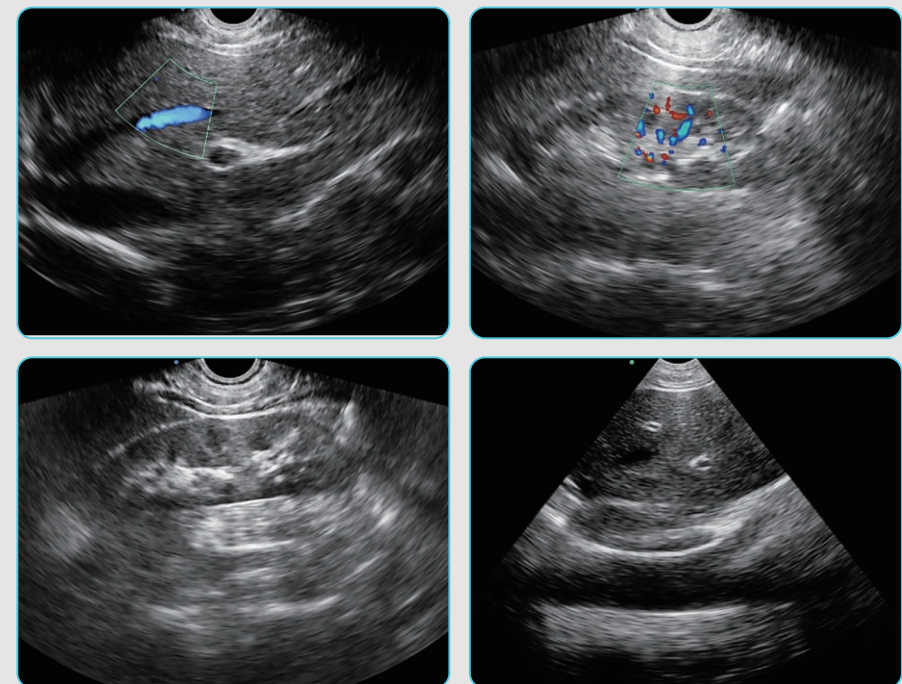
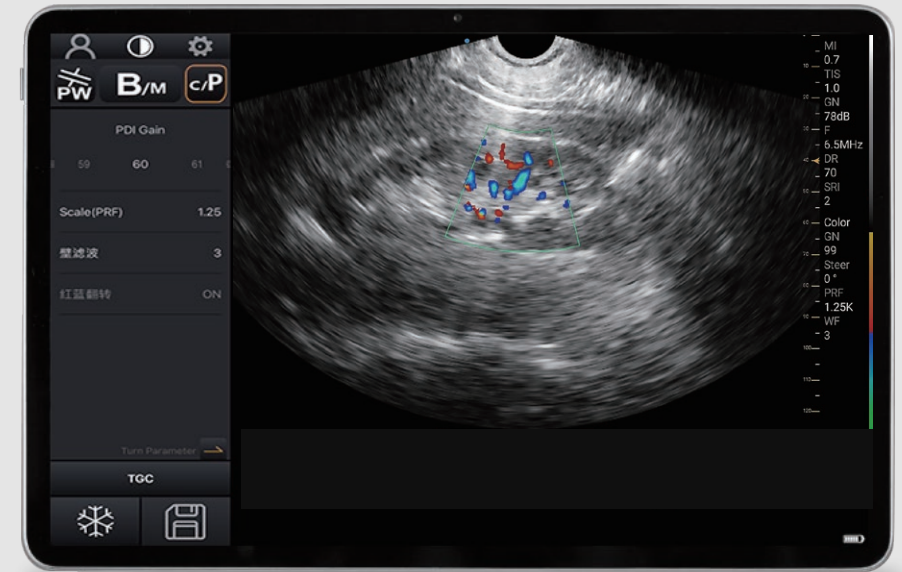
Elements: 128 2.7MHz



Micro-Convex Probe scanner

Model C2

Elements: 128 6.0MHz



Exhibition

**DAWEI'S PRODUCTS WILL
COVER ALL COUNTRIES
AND REGIONS
IN THE WORLD.**



For Love,
Image The World.

